

HE  
2717  
A512  
1870  
MHT

THE WAY  
TO ENTERTAINMENT



PRIMA SEPTE 1870





Handwritten text, likely bleed-through from the reverse side of the page. The text is faint and illegible due to the low contrast and grainy quality of the scan.

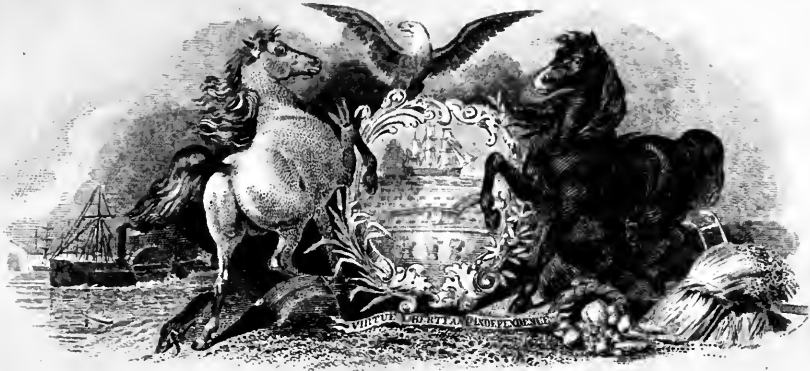
Given E. F. B. by the Testate  
Oct. 31

PURCHASED BY THE  
LAND TRANSPORTATION FUND  
FOR THE  
NATIONAL MUSEUM OF HISTORY AND TECHNOLOGY  
JOHN H. WHITE - CURATOR

THE UNIVERSITY  
OF THE STATE OF NEW YORK  
LIBRARY

ALBANY, N. Y.  
1911

HE  
2717  
A512  
1870  
MHT



Complimentary Entertainments

GIVEN TO

The American  
Railway Master Mechanics  
Association

BY THEIR  
Friends in the City of Philadelphia  
at their

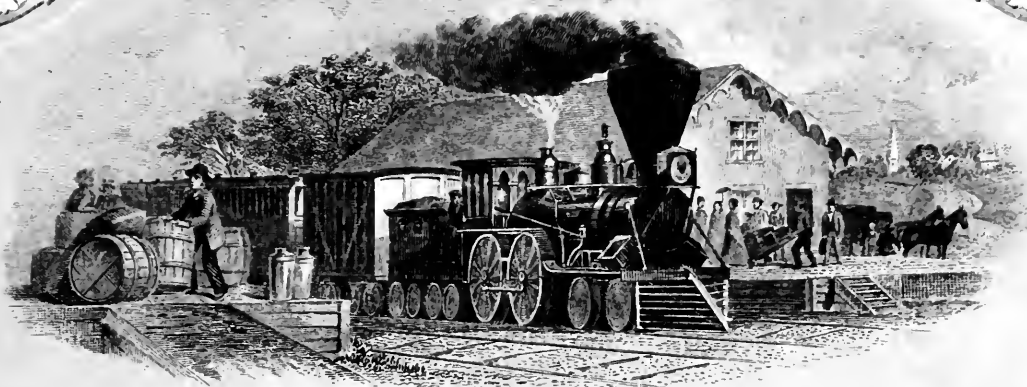
Third Annual Convention,

Sept. 14<sup>th</sup> 15<sup>th</sup> 16<sup>th</sup> 17<sup>th</sup> 1870.

SMITHSONIAN

LIBRARIES





*Philadelphia August 18<sup>th</sup> 1870.*

*At a Meeting held June 1870 at the Continental Hotel  
by the Manufacturers who are directly interested in the Railway  
interests of this Country, the following Gentlemen were appointed  
to act as Executive Committee to arrange for the entertainment of*

**THE AMERICAN  
RAILWAY MASTER MECHANICS  
ASSOCIATION.**

*at their Third Annual Convention to be held in this City  
September 14<sup>th</sup> 15<sup>th</sup> and 16<sup>th</sup>*

**CHARLES T. PARRY, Chairman.**

**WILLIAM B. BEMENT.**

**GEORGE WHITNEY.**

**WILLIAM BUTCHER.**

**JOHN SELLERS JR.**

**EDWARD W. COIT.**

**J. WESLEY ALLISON.**

**SAMUEL HUSTON, Treasurer. E. W. COIT, Secretary.**





*At the First Regular Meeting of the Executive Committee, held  
July 30th, 1870, the following*

## Committees

WERE APPOINTED:

### FUND COMMITTEE.

Charles T. Parry, *Chairman.* John Sellers, Jr.

### RECEPTION COMMITTEE.

Charles T. Parry, *Chairman.* William C. Allison. George Whitney. James Dougherty.  
Edward H. Williams. J. Vaughn Merrick. Saml. Huston. Saml. J. Reeves.  
Percival Roberts. Stephen M. P. Tasker. John Sellers, Jr. Wm. N. Marcus.

### INVITATION COMMITTEE.

Asa Whitney. Samuel V. Merrick, *Chairman.* Matthew Baird.

### PRESS AND SENTIMENT COMMITTEE.

George Burnham, *Chairman.*  
Edward H. Williams. William Toothe. William R. Nicholas. J. Vaughn Merrick.

### BANQUET COMMITTEE.

Charles T. Parry. William Butcher, *Chairman.* George Whitney.  
Edward W. Coit. Wm. B. Bement. John Sellers, Jr. J. Wesley Allison.

### DECORATION COMMITTEE.

John Rice. William B. Bement, *Chairman.* J. E. Kingsley.

### PRINTING COMMITTEE.

William B. Bement, *Chairman.* Philip J. Potter.

### THEATRICAL COMMITTEE.

William B. Bement. Charles T. Parry, *Chairman.* J. Wesley Allison.

### HALL COMMITTEE.

Philip J. Potter, *Chairman.* William B. Bement.

### PARK EXCURSION COMMITTEE.

William Sellers, *Chairman.*  
Joseph Harrison, Jr. Thos. T. Tasker, Jr.

### RIVER EXCURSION COMMITTEE.

Capt. Theodore Julius, *Chairman.*  
Stephen Morris. E. L. Levy.

### CARRIAGE COMMITTEE.

Henry W. Hook. Charles J. Field, *Chairman.* William H. Tasker.

### SEA SHORE EXCURSION COMMITTEE.

J. M. Hibbs. Wm. N. Marcus, *Chairman.* D. L. Sylvester.

STATEMENT

of the

...

...

...

...

...

...

...

...

...

...

...

...

...

...

...

...

...

...

...

...



# Compliments

TO THE  
**Rail Road Master Mechanics**  
OF THE  
**UNITED STATES**  
AND THEIR FRIENDS

At their 3<sup>d</sup> Annual **CONVENTION**  
September 14<sup>th</sup>, 15<sup>th</sup>, 16<sup>th</sup> & 17<sup>th</sup>, 1870.

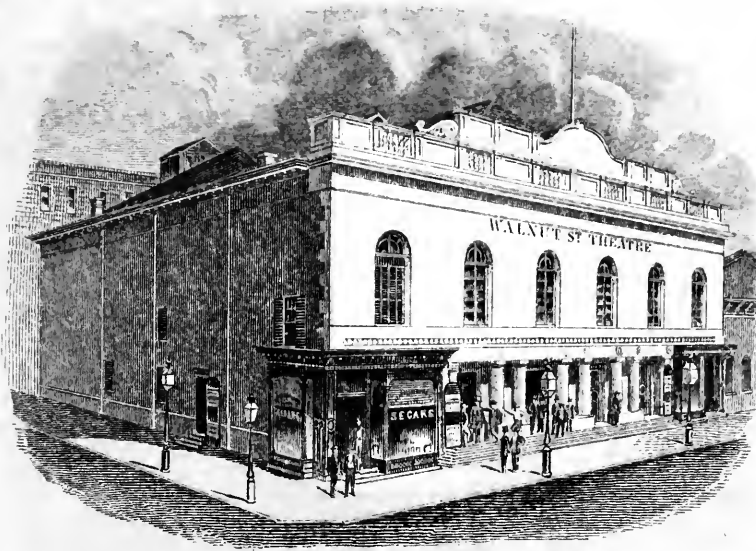
*Philadelphia.*

COMMITTEE ON INVITATIONS: Samuel V. Merrick, Chairman.  
Asa Whitney.  
Matthew Baird.

## Contributors:

<i>M. Baird &amp; Co.</i>	<i>Morris, Tasker &amp; Co.</i>	<i>A. Whitney &amp; Sons.</i>
<i>Bement &amp; Dougherty.</i>	<i>Wm. C. Allison &amp; Sons.</i>	<i>Wm. Sellers &amp; Co.</i>
<i>Wm. Butcher, Steel Works.</i>	<i>Merrick &amp; Sons.</i>	<i>Samuel V. Merrick.</i>
<i>Phoenix Iron Works.</i>	<i>A. &amp; T. Roberts &amp; Co.</i>	<i>Cambria Iron Co.</i>
<i>Nasfic &amp; Lory.</i>	<i>Field &amp; Hardie.</i>	<i>Guard Tube Works &amp; Iron Co.</i>
<i>Hunsworth &amp; Naylor.</i>	<i>Morris Wheeler &amp; Co.</i>	<i>J. P. Morris &amp; Co.</i>
<i>Hoopes &amp; Townsend.</i>	<i>W. N. Marcus &amp; Son.</i>	<i>Nichols, Pickering &amp; Co.</i>
<i>Philip J. Potter.</i>	<i>N. A. Middleton.</i>	<i>H. W. Hook.</i>





Third Annual Convention  
OF  
The American Railway Master Mechanics Association.

*You are invited to attend a representation by*

*Edwin Forrest*

OF

*Richelieu.*

*Wednesday Evening September 14<sup>th</sup> 1870.*

**WALNUT STREET THEATRE.**

*Enclosed please find Card of Admission.*

*By order of the Committee on Invitations.*



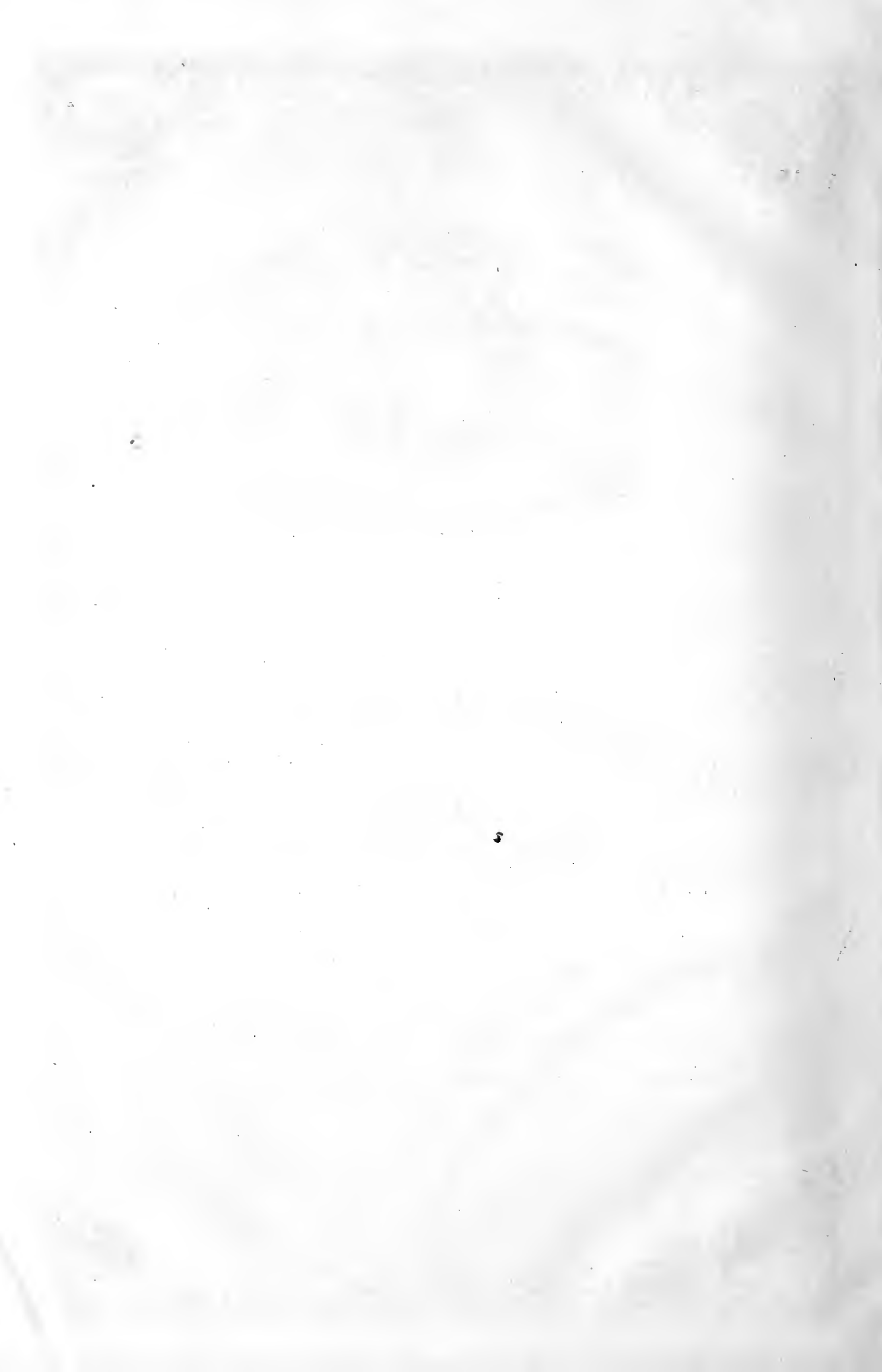


EXCURSION TO  
**THE PARK.**

Dear Sir

The Pleasure of your Company, is desired  
on Thursday, September 15<sup>th</sup> to visit **The Park.**

Carriages will be in readiness, at the Continental Hotel  
at 4 o'clock P.M.





EXCURSION TO  
THE PARK.

Bill of Fare.

Lamb Chops, Breaded, Sauce Soubise.

Lamb Chops, Broiled, Sauce Tomatoes.

Potatoes, a la Parisienne.

French Peas.

Chicken Croquettes.

Soft Shell Crabs.

Deviled Crabs.

Chicken Salad.

Lobster Salad.

Fried Cysters.

Roast Birds.

Saratoga Potatoes.

Olives.

Chow-Chow.

Coffee and Tea.

WINES.

Rhine.

Claret.

Champagne.

Brandy.

Whiskey.

Lemonade.

Segars.





COMPLIMENTARY  
**BANQUET**  
TO THE  
**Rail Road Master Mechanics.**

CONVENTION HOTEL

PHILADELPHIA

*Friday Evening, Sept. 16<sup>th</sup> 1870.*  
*At 7 O'Clock.*



Banquet

Given to

THE AMERICAN RAILWAY MASTER MECHANICS

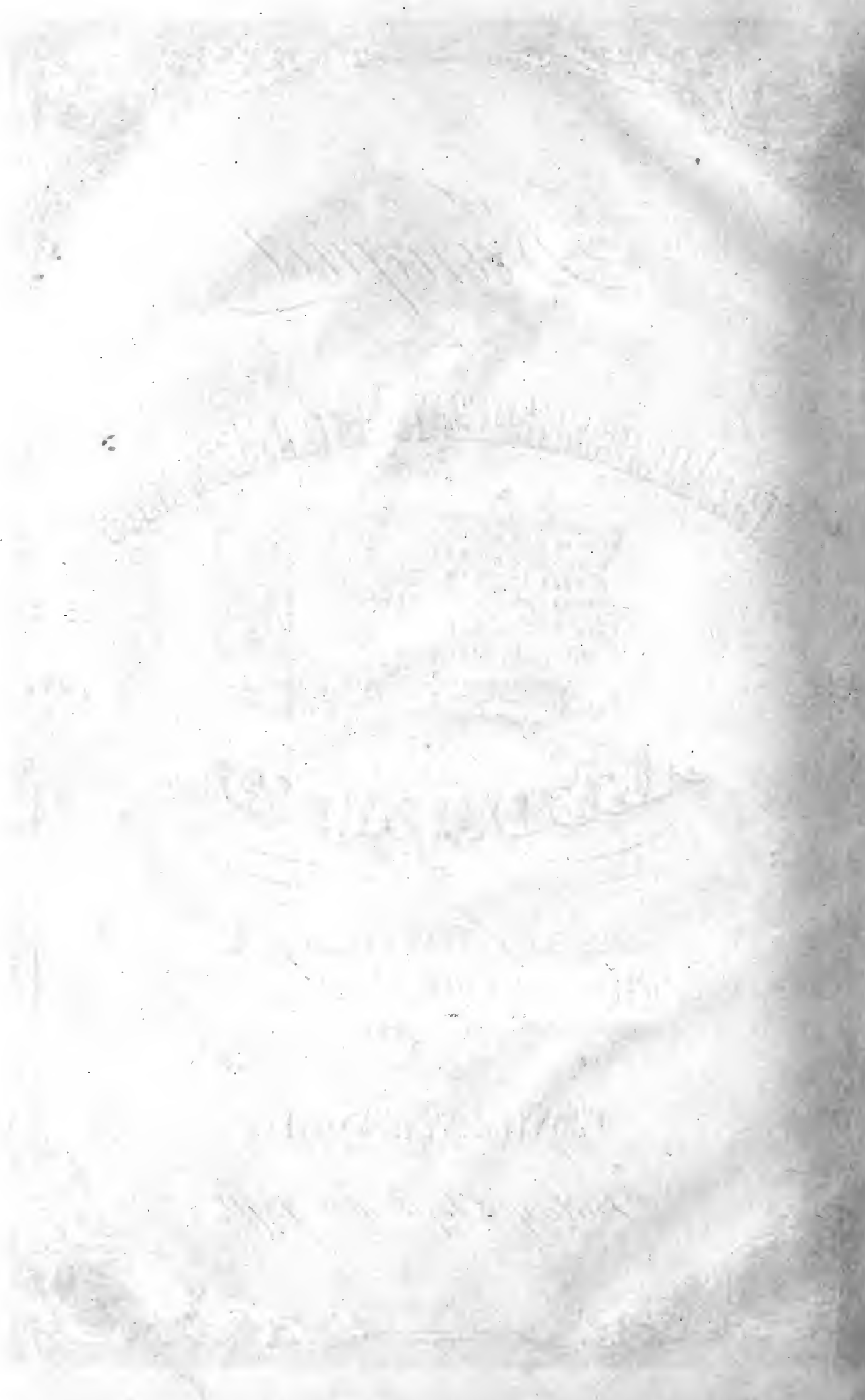


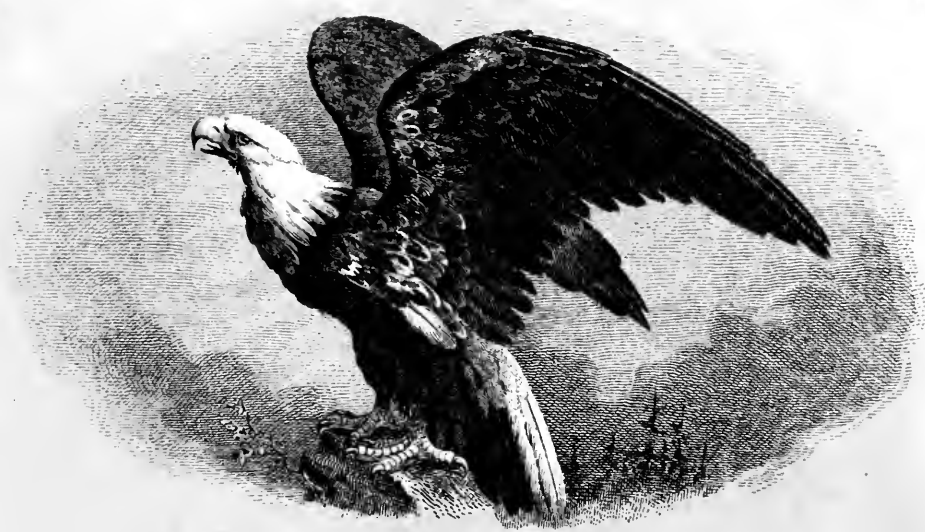
ASSOCIATION

BY THEIR  
PHILADELPHIA FRIENDS  
AT THE

CONTINENTAL HOTEL.

Friday Sept. 16<sup>th</sup> 1870.





Welcome TO OUR Guests.

The American  
Railway Master Mechanics  
Association

OFFICERS:

H. M. BRITTON, PRESIDENT. N. E. CHAPMAN, VICE PRES.  
L. P. DODGE, SECRETARY. S. J. HAYES, TREASURER.





Bill of Fare.

OYSTERS ON SHELL.

SAUTERNE.

Soup.

Green Turtle.

A la Reine.

SHERRY.

Fish.

Broiled Spanish Mackerel, a la Maitre d'Hotel.

Boiled Salmon, a la Collegienne.

CHABLIS.

Removes.

Roast Capons, stuffed, Truffle Sauce.

Roast Filet of Beef, with Mushrooms.

ROEDERER'S IMPERIAL CHAMPAGNE,

Entrees.

Sweet-breads, with French Peas.

Lamb Cutlets, a la Mareschal.

Croquettes of Chicken, a la Duchess.

Vol au Vent, a la Financiere.

HOCK LIEBFRAUMILCH.

Relieve.

ROMAN PUNCH.

Game.

Prairie Chickens.

Plover.

Reed Birds.

MUMM'S DRY VERZENAY,

Salads.

Pastry.

Souffle, au Vanilla.

Jellies.

Confections.

Dessert.

Fruits.

Ice Creams.

Water Ices.

COFFEE AND LIQUORS.

FLORAL DECORATIONS BY GRAHAM.





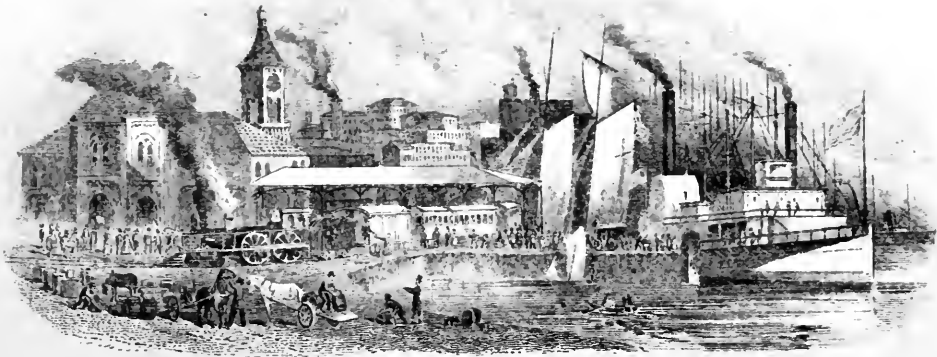
## Programme of Music

Performed by

**HASSLER'S GRAND MILITARY BAND.**

1. *Master Mechanics' Grand March*, - - - - - HASSLER.  
Composed and dedicated to the Officers and Members of the "American Railway  
Master Mechanics' Association," by Mark Hassler.
2. Overture, - - - "*La Muette de Portici*," - - - - - AUBER.
3. Song, - - - "*Sweet Spirits, hear my Prayer*," - - - WALLACE.
4. Wedding March, *Midsummer Night's Dream*, MENDELSSOHN.
5. Reveries, - - - from the Opera, "*Maritana*," - - - WALLACE.  
*a* { "*In Happy Moments*."  
*b* { "*Prison Song*."
6. Waltzes, - - - "*Wine, Woman and Song*," - - - STRAUSS.
7. Grand Selections, from the Opera, "*Martha*," FLOTOW.
8. The Trumpetter's Polka, - - - - - JULLIEN.  
(Obligato for Cornets.)
9. Selections, - - - "*La Belle Helene*," - - - OFFENBACH.
10. Grand American Medley, - - - - - HASSLER.  
(Introducing National and Popular Airs.)
11. Grand Selections, from Opera "*Faust*," - - - - - GUINOD.





COMPLIMENTARY EXCURSION

TO

THE AMERICAN

RAILWAY MASTER MECHANICS ASSOCIATION

ON THE

DELAWARE RIVER.

*You are invited to be on board the Steamer  
Twilight at Chestnut St. Wharf on Saturday  
September 17<sup>th</sup> 1870 at 10 o'clock, A. M.*

*You are also requested to be prepared to go on  
a Railway Excursion to Cape May upon leaving  
the Boat.*

*By order of Committee on Invitation.*





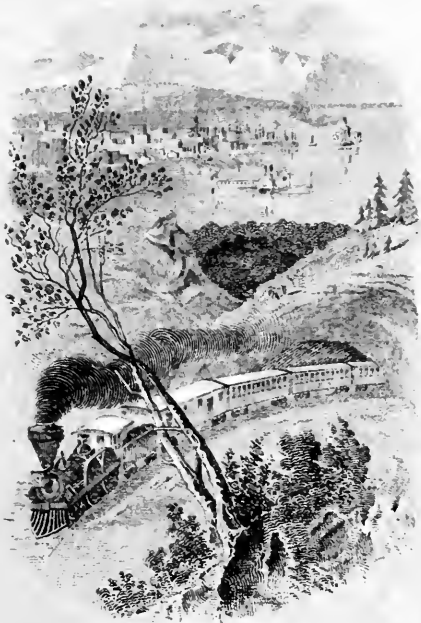
## Bill of Fare.

For Lunch on board Steamer "Gwiliight,"

SEPTEMBER 17TH, 1870.

- 
- Cold Boiled Salmon, a la Mayonaise.  
Cotelettes of Chicken, Breaded.  
Beef, a la Mode.  
Pressed Corn Beef.  
Boiled Tongue. \_\_\_\_\_ Boiled Ham.  
Cheese. \_\_\_\_\_ Pickles. \_\_\_\_\_ Olives, &c.  
Neapolitan Ice Cream.  
Cakes.  
Fruit of all kinds.  
Claret Wine. Rhine Wine. Sherry Wine.  
Claret Punch. Lemonade.  
Whiskey. Brandy.  
Segars.





SEA SHORE EXCURSION

TO

CAPE MAY

VIA

WEST JERSEY RAIL ROAD

SATURDAY SEPT 17<sup>TH</sup> 1870

*The pleasure of your Company is requested  
on the above excursion.*

*Upon conclusion of the River excursion  
the Steamer will land our guests at the Rail  
Road Depot Camden, N. J.*

*By order of the Committee.*







PURCHASED BY THE  
LAND TRANSPORTATION FUND  
FOR THE  
NATIONAL MUSEUM OF HISTORY AND TECHNOLOGY  
JOHN H. WHITE - CURATOR

SMITHSONIAN INSTITUTION LIBRARIES



3 9088 00231174 4

nmah HE2717.A512 1870

Complimentary entertainments given to th

RAIL WAY  
ENTERTAINMENTS



PHILAD. SEPT. 1870.